

Ver 1.2

J-VER

2010 1 22

			CO2	

			CO2	
			CO2	
CO2		CO2	CO2	
			CO2	

4 6

1.

$$ER_y = BE_{,y} - (PE_{,y} + PE_{,y} + PE_{,y} + PE_{,y}) \times tCO2/CO2$$

	BE _{,y}	PE _{,y}	PE _{,y}	PE _{,y}	PE _{,y}	ER
2008	-	-	-	-	-	-
2009	153.5	0	5.1	16.5	0.00130	131.8
2010	376.3	0	11.9	40.4	0.00394	324.1
2011	360.1	0	11.4	38.6	0.00155	310.1
2012	319.9	0	10.2	34.3	0	275.4
合計	1209.8	0.0	38.6	129.8	0.00678	1041.4

2

BDF100%

$$BE_{,y} = BFC_{,y} \times NCV_{,y} \times CEF$$

	BFC _{,y}	NCV _{,y}	CEF	BE _{,y}
2008	-	33	0.0687	-
2009	67.7	33	0.0687	153.5
2010	166.0	33	0.0687	376.3
2011	158.8	33	0.0687	360.1
2012	141.1	33	0.0687	319.9

3-1.

61

3-2

$PE_{,y} = PE_{,y} \times PE_{,y}$
 $PE_{,y}$
 $PE_{,y}$

$PE_{,y} = EC_{,y} \times CEF$
 $PE_{,y}$
 $EC_{,y}$
 CEF

CO_2 $tCO_2/$
 CO_2 $tCO_2/$
 CO_2 $tCO_2/$
 CO_2 $tCO_2/$
 $MWh/$

H_2O H_2I

	EC _{,y}	CEF	PE _{,y}	PE _{,y}	PE _{,y}
2008	-	0.000425	-	-	-
2009	12317.0	0.000418	5.1	0	5.1
2010	28420.6	0.000418	11.9	0	11.9
2011	27251.4	0.000418	11.4	0	11.4
2012	24357.7	0.000418	10.2	0	10.2

3-3

$PE_{,y} = MC_{,y} \times CEF_{,y}$
 $PE_{,y}$
 $MC_{,y}$
 $CEF_{,y}$

$t/$
 CO_2 1.38

CO_2 $tCO_2/$

	MC _{,y}	CEF _{,y}	PE _{,y}
2008	-	-	-
2009	11.9	1.38	16.5
2010	29.3	1.38	40.4
2011	28.0	1.38	38.6
2012	24.9	1.38	34.3

3-4

$PE_{,y} = PE_{,y}$
 $PE_{,y}$
 $tCO_2/$
 $PE_{,y}$

CO_2 $t-CO_2/$
 61

$PE_{,y} = D_{,y} / AFC_{,y} / 1000 \times NCV_{,y} \times CEF_{,y}$
 $D_{,y}$
 $AFC_{,y}$
 $NCV_{,y}$
 $CEF_{,y}$

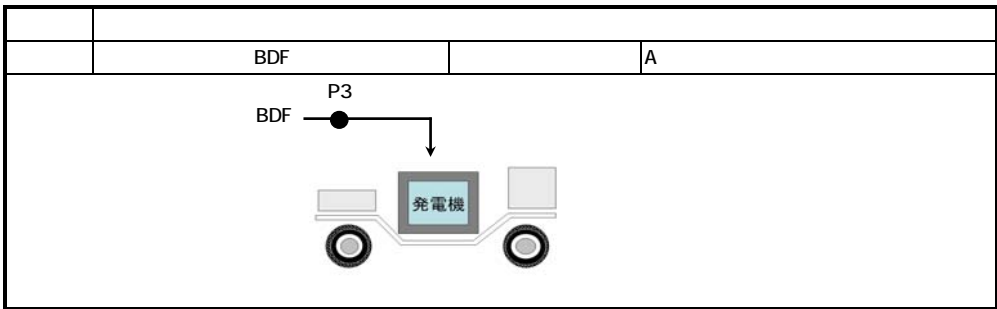
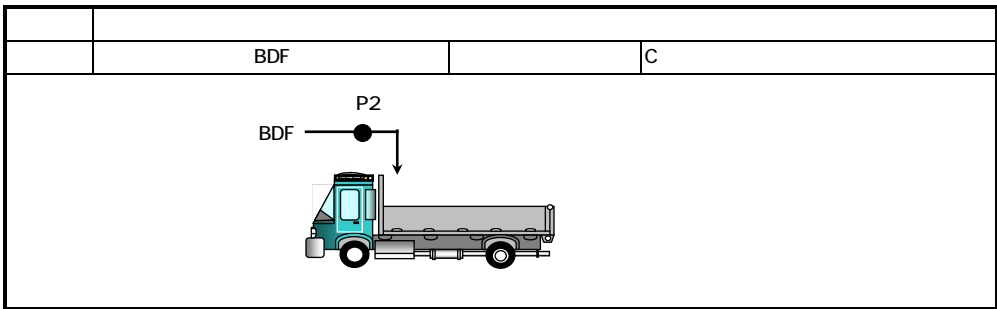
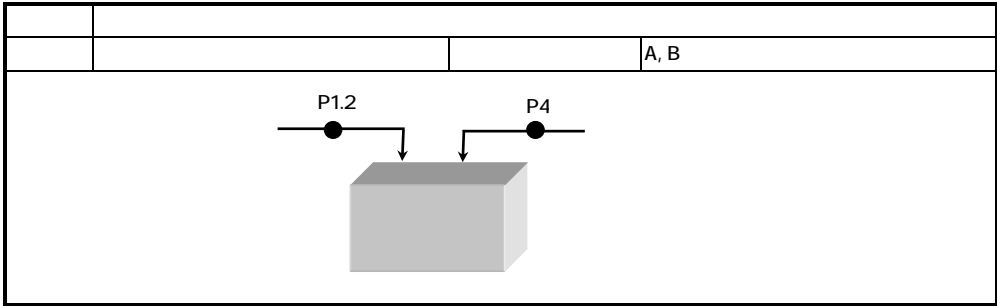
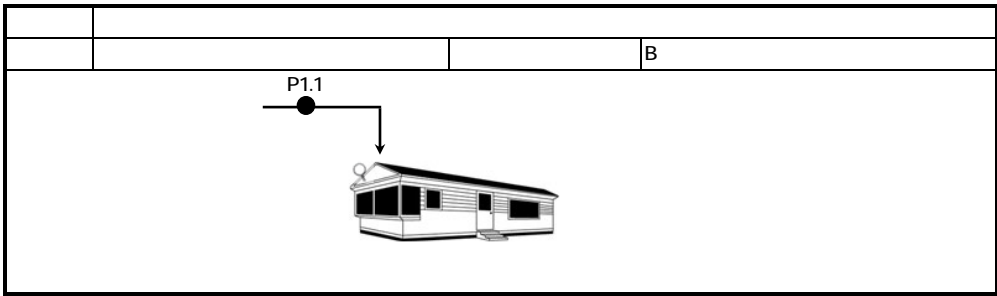
km/l $4t$ $6t$
 GJ/k
 CO_2 tCO_2/GJ

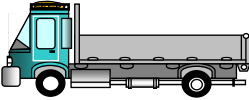
1.2 1.0

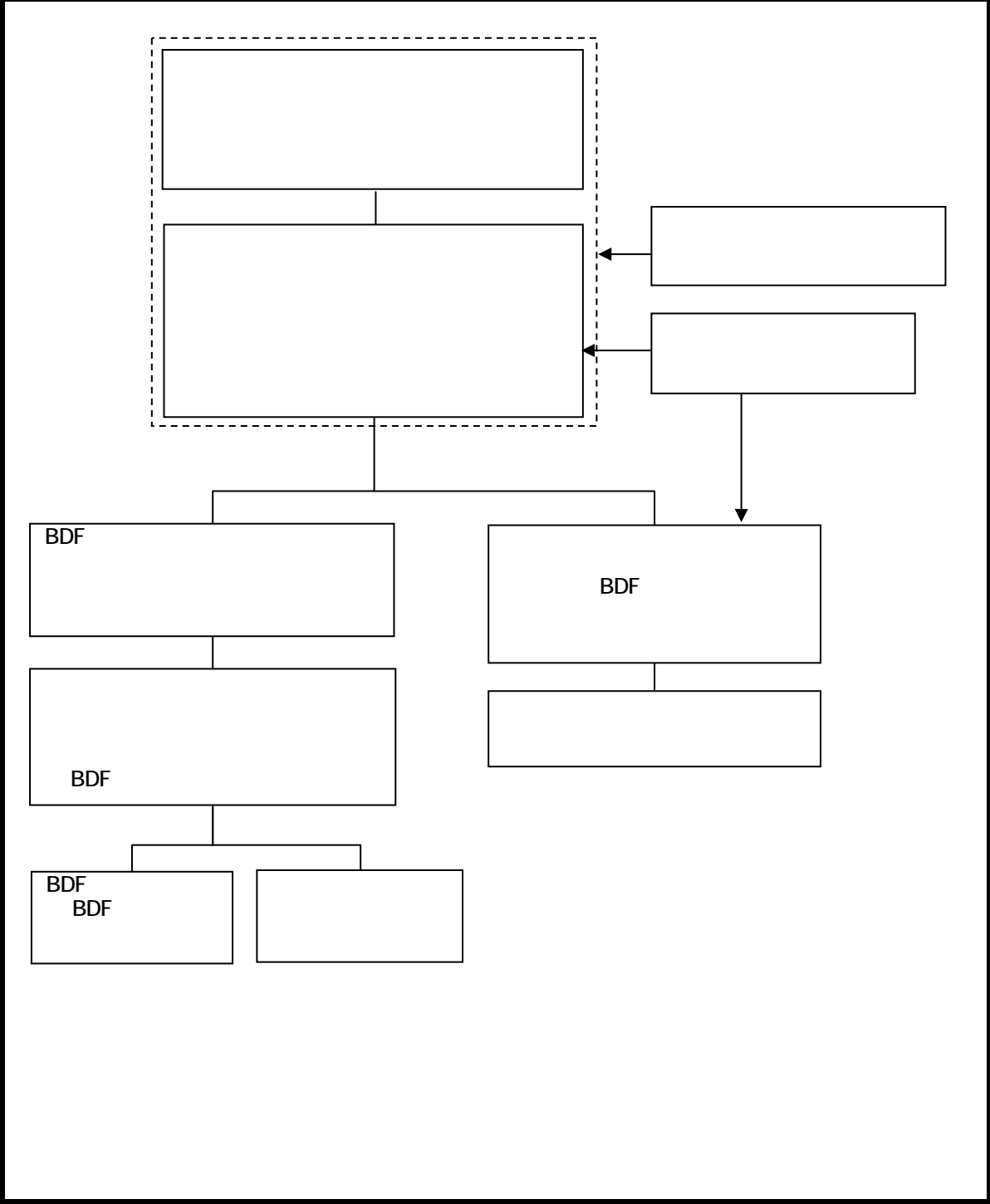
	D _{,y}	AFC _{,y}	NCV _{,y}	CEF _{,y}		PE _{,y}
2008	0	3.79	37.7	0.0687	1.2	0
2009	2254.502	3.79	37.7	0.0687	1.2	0.00130
2010	6820.582	3.79	37.7	0.0687	1.2	0.00394
2011	2682.572	3.79	37.7	0.0687	1.2	0.00155
2012	0	3.79	37.7	0.0687	1.2	0

No											
				A C				(1.3)			
1	Q			B			2014/5/1		500t		
P1.1	EC , y			B			2019 8			x	
P1.2	EC , y			B			2019 8			x	
P2	BFC , y			C							
P3	BFC , y			A-1							
P4	MC , y			A-1							
P5.1	D , y		gpo	C					14.269km		
P5.2	D , y			B							
P6	D , y		gpo	C					0		km

No											
									(1.3)		
2	NCV _y				JIS Z 7302-2:1999	1			2013/10/1	2000	
	NCV _y									33[GJ/kJ]	
	CEF									00687 [tCO ₂ /GJ]	
	CEF									0.425 [tC ₂ /kWh]	
	CEF _y									1.38 [tCO ₂ /t]	
	AFC _y									3.79 [km/l]	
	AFC _y									3.79 [km/l]	
	NCV _y									37.7 [GJ/kJ]	
	CEF _y									00687 [tCO ₂ /GJ]	
					BDF						



	/BDF	
	BDF	B, C
 <p>P51 BDF P52 BDF P6</p>		



(1)

BDF

BDF

BDF

BDF

(2)

pdf

(3)

(4)

※独自の様式や手順書等を作成している場合には本様式に添付しても良い。

